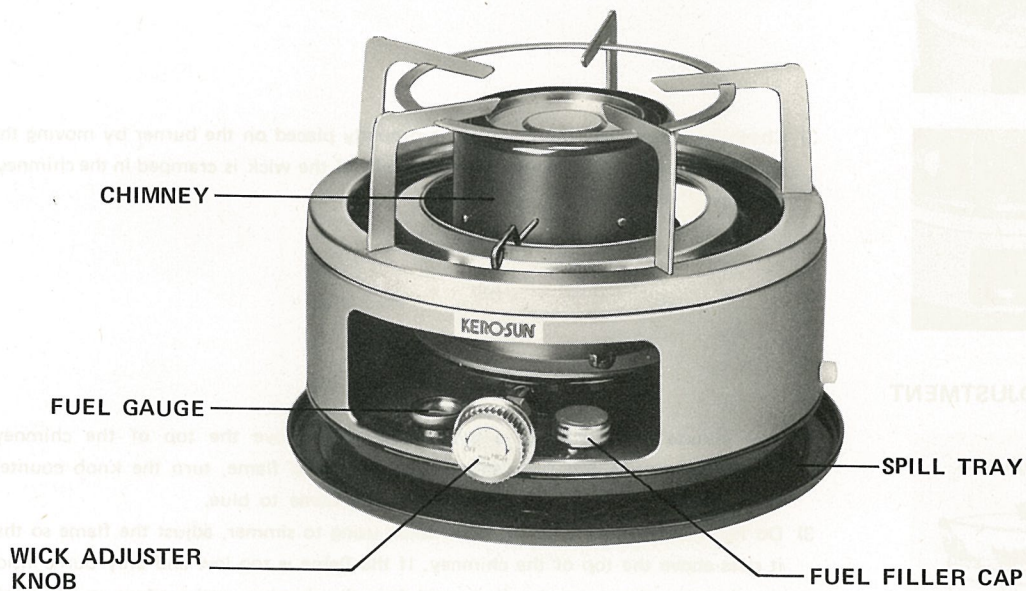


KERO-SUN^{INC.}

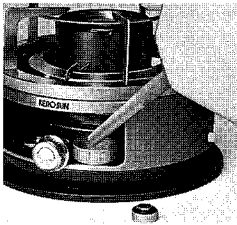
DIRECTIONS FOR OPERATING KERO-SUN COOKSTOVE MODEL K



INSPECTION

- 1) Remove the cookstove from the carton, then remove the protective cardboard.
- 2) Inspect to make sure that none of the screws or nuts have become loose during shipment.
- 3) Turn the wick adjuster knob clockwise to insure that the wick moves up and down uniformly and smoothly to a height of 6 mm ($\frac{1}{4}$ inch) above the wick adjuster.
- 4) Check that the fuel tank is fixed to the tray.

FUELING

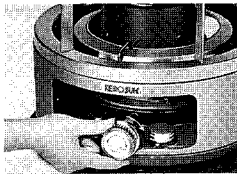


- 1) Remove the fuel filler cap.
- 2) Place the funnel in the tank inlet.
- 3) After filling the tank, replace the fuel filler cap on the tank inlet. Make sure that it is firmly in place.
- 4) If any oil is spilled, wipe it dry with a rag.

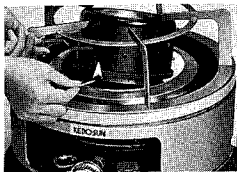
WARNING

Use only pure kerosene. Never use gasoline or other flammable distillates. Use of such fuels can result in an explosive fire and cause severe injury.

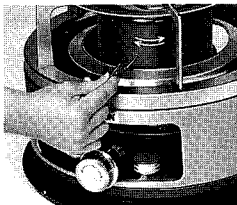
LIGHTING PROCEDURE



- 1) Turn the wick adjuster knob clockwise as far as possible to raise the wick.



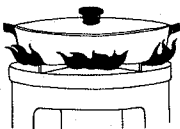
- 2) Raise the prong on the lower part of the chimney. Light the top of the wick with a match.



- 3) Check to insure that the chimney is properly placed on the burner by moving the chimney prong gently to the right and left. If the wick is cramped in the chimney, the stove will smoke.

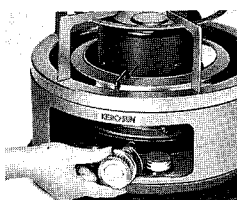
FLAME ADJUSTMENT

× Too high wick



- 1) One minute after lighting, a blue flame rises above the top of the chimney.
- 2) If the flame rises too high and burns with a red flame, turn the knob counter-clockwise to lower the wick and change the flame to blue.
- 3) Do not use too low a flame. Even when using to simmer, adjust the flame so that it rises above the top of the chimney. If the flame is too low and only burns inside the chimney, the simmering flame will dirty the chimney, and produce an oily smell.

TO EXTINGUISH

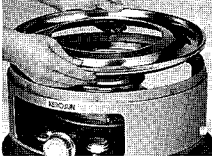


Turn the wick control knob counter-clockwise until it stops. The flame will go out in a short time. After turning off the fire, check to make sure that the flame is completely out.

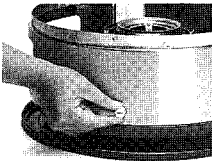
REPLACING THE WICK



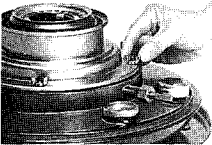
- 1) Remove the top grate and the chimney.



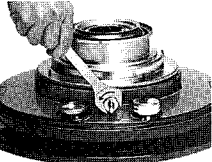
- 2) Next take off the drip pan.



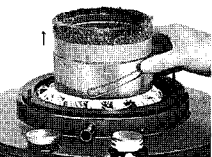
- 3) After pulling off the knob, remove the two thumb-screws on the body and lift off the cabinet gently.



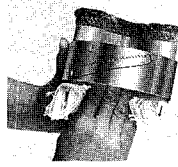
- 4) Unscrew the four wing nuts on the lower part of the burner and then lift it out.



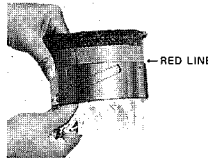
- 5) Turn the nut counter-clockwise by using spanner and remove it. Then gently pull the stem toward you to remove.



- 6) Lift up the wick holder and remove it from the tank.



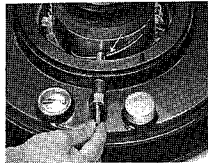
- 7) Take out the old wick from the wick holder by folding it.



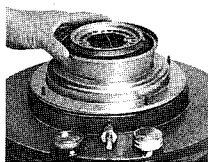
- 8) Insert the fourfolded new wick into the wick holder. Position the wick so that the red line on the wick aligns with the top edge of the wick holder, and then unfold wick over the inner wall of the wick holder.



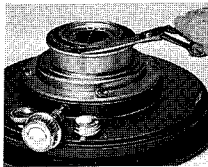
- 9) Unfold the lower part of the wick and carefully replace the wick holder unit onto the tank.



- 10) Insert the stem into the pipe and mate pinion gear with the rack in the holder.



- 11) Place the burner in position on the tank. Take care that a loose wick end does not hang out of the tank.



- 12) Fasten the burner firmly with wing nuts when the wick clearance is even all around its circumference. Check to insure that the wick moves smoothly. Using scissors, cut off any ragged edges of the wick along the top rim of the burner.

ALWAYS USE GOOD QUALITY KEROSENE

Good quality kerosene means Illuminating Grade White Water Kerosene, sometimes called Crystalite. If kerosene looks cloudy or is orange or deep yellow, do not use it. Demand clear kerosene.

The fiberglass wick in your cookstove will last a long time if you use good kerosene.

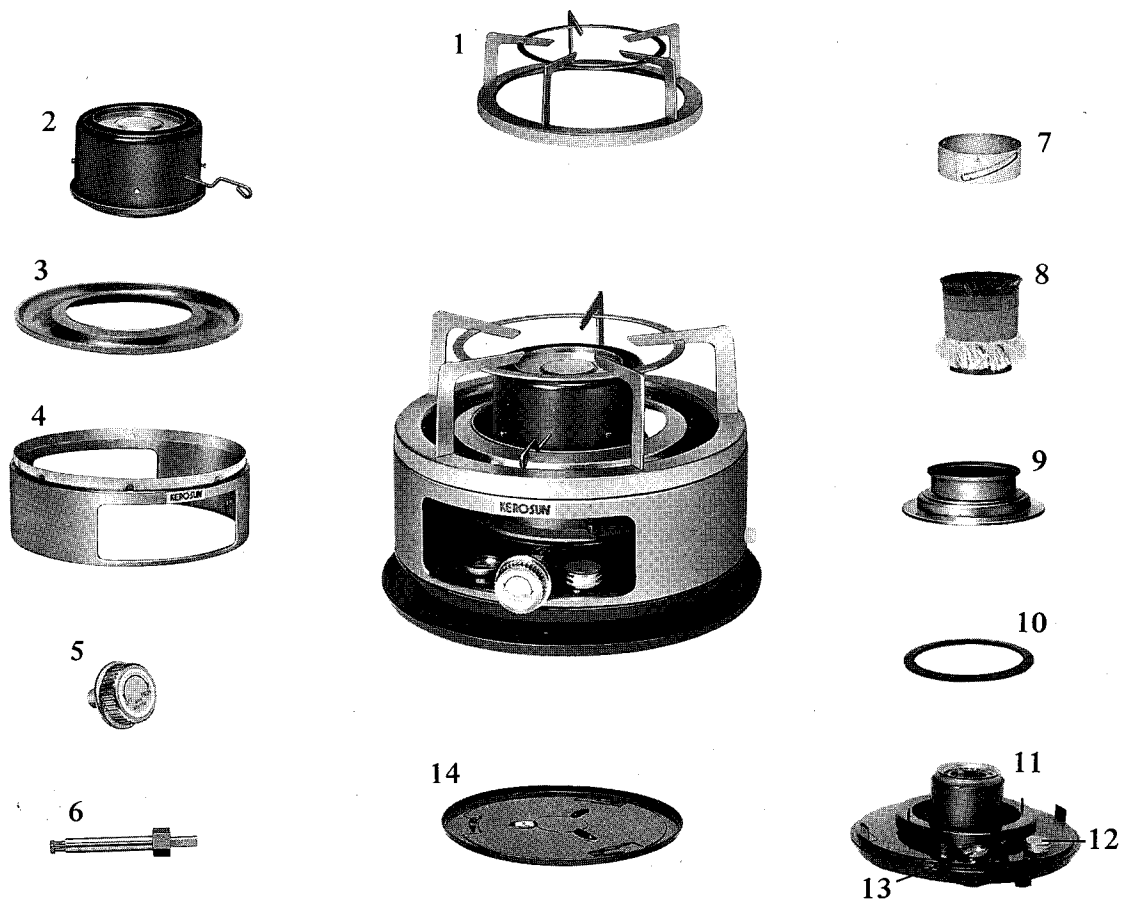
PROPER STORAGE OF KEROSENE

Always store your fuel in a clean container marked "kerosene". Avoid storage in direct sunlight as frequent temperature changes will cause water condensation in the tank. Check for water in kerosene by siphoning fuel into a clear glass jar. If water is present it will settle in a layer on the bottom of the jar or cause the fuel to appear cloudy. Water in your fuel tank will cause the flame to flicker, get smaller and finally go out.

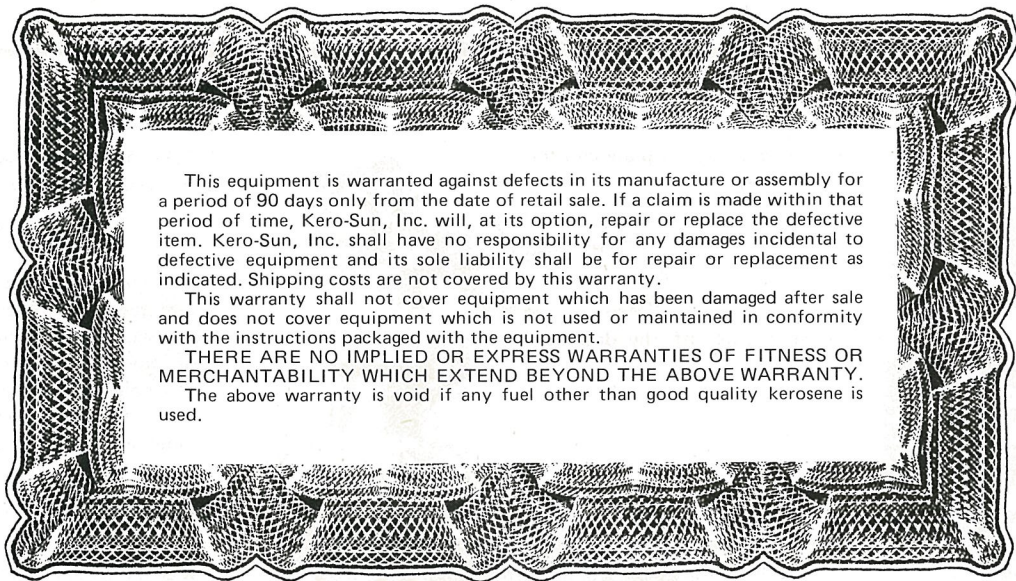
CLEANING THE CHIMNEY AND WICK

- 1) If the many small holes in the inside of the chimney become plugged because of food boiling over, the flame will not burn properly. Clean the chimney holes by using a brush.
- 2) Brush the wick very gently periodically to remove accumulated carbon. (Use an old tooth brush or any similar soft brush.)

**MODEL K
PARTS LIST**



1	Top Grate	6	Stem	11	Fuel Tank
2	Chimney	7	Wick Holder	12	Fuel Filler Cap
3	Drip Pan	8	Glass Fiber Wick	13	Fuel Gauge
4	Cabinet	9	Burner	14	Tray
5	Wick Adjuster Knob	10	Packing		



This equipment is warranted against defects in its manufacture or assembly for a period of 90 days only from the date of retail sale. If a claim is made within that period of time, Kero-Sun, Inc. will, at its option, repair or replace the defective item. Kero-Sun, Inc. shall have no responsibility for any damages incidental to defective equipment and its sole liability shall be for repair or replacement as indicated. Shipping costs are not covered by this warranty.

This warranty shall not cover equipment which has been damaged after sale and does not cover equipment which is not used or maintained in conformity with the instructions packaged with the equipment.

THERE ARE NO IMPLIED OR EXPRESS WARRANTIES OF FITNESS OR MERCHANTABILITY WHICH EXTEND BEYOND THE ABOVE WARRANTY.

The above warranty is void if any fuel other than good quality kerosene is used.

SAFETY PRECAUTIONS

- Ensure adequate ventilation during operation. The heater needs oxygen just as you do.
- Use only clean, pure and fresh kerosene.
- Keep outside of heater clean.
- Always keep heater in a level position.
- After extinguishing heater, make sure it is completely out.
- Do not operate the heater near clothing, curtains or any flammable articles.

What to do in case of defect:

Bring your Kero-Sun product and sales slip to your Kero-Sun Dealer or send copy of sales slip as proof of purchase along with a brief letter stating nature of the defect, name and address of your Kero-Sun Dealer, and your own address and telephone number to:

Warranty Department
Kero-Sun, Inc.
Box 340, Main Street
Kent, Ct. 06757

Our customer service representative will direct you to the nearest Kero-Sun Service Center or otherwise solve service problems for you.



PORTABLE HEATERS

Puts the WARM where you want it!

KERO-SUN, INC., BOX 340, KENT, CONN. 06757

TEL. (203) 927-3585